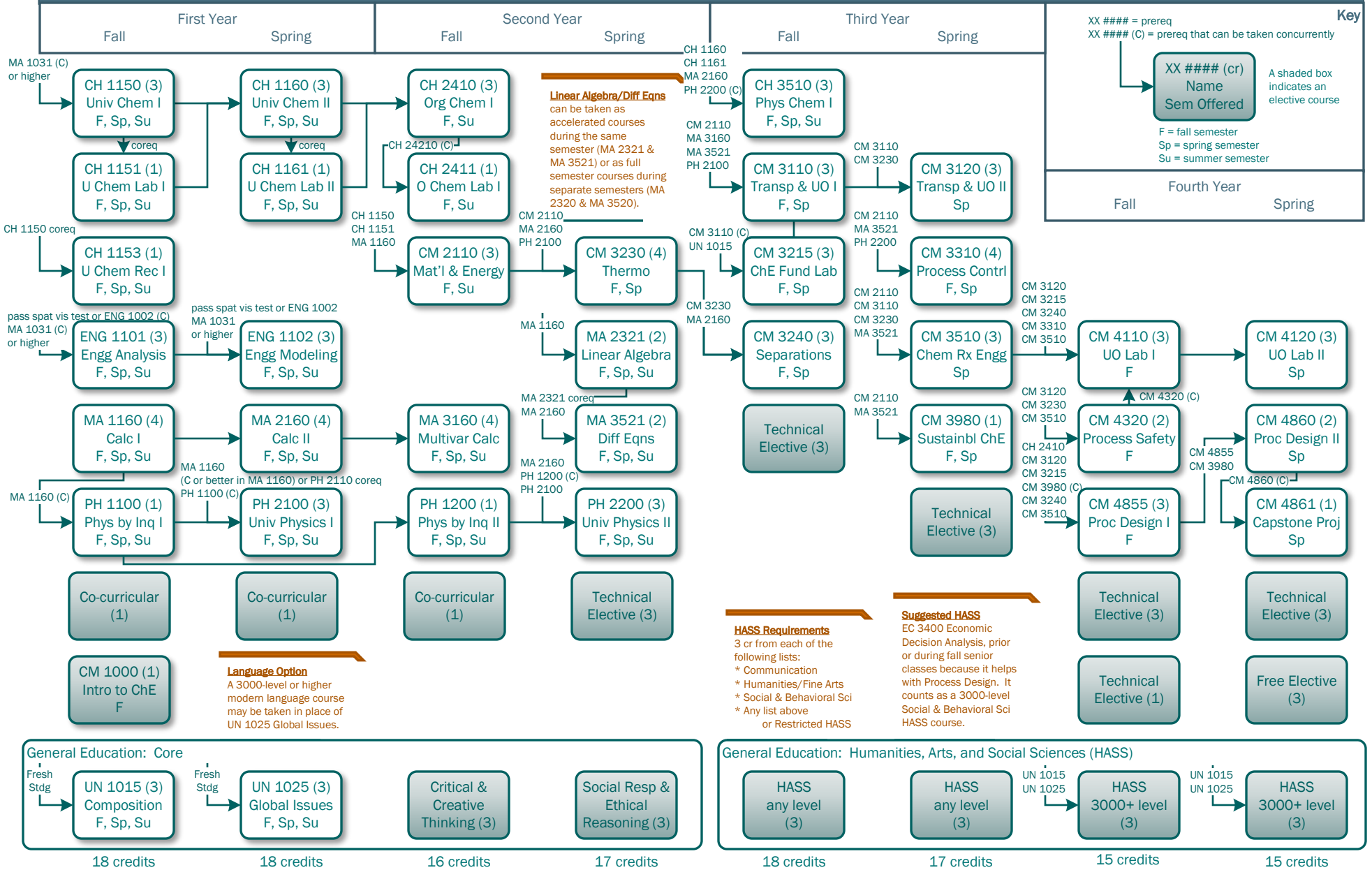


Bachelor of Science in Chemical Engineering

Updated 6/7/2023

For students starting in the 2023-24 academic year.



Key

XX #### = prereq
 XX #### (C) = prereq that can be taken concurrently

XX #### (cr)
 Name
 Sem Offered

A shaded box indicates an elective course

F = fall semester
 Sp = spring semester
 Su = summer semester

Fall	Fourth Year	Spring
------	-------------	--------

HASS Requirements
 3 or from each of the following lists:
 * Communication
 * Humanities/Fine Arts
 * Social & Behavioral Sci
 * Any list above or Restricted HASS

Suggested HASS
 EC 3400 Economic Decision Analysis, prior or during fall senior classes because it helps with Process Design. It counts as a 3000-level Social & Behavioral Sci HASS course.

This is not an official list of degree requirements. For an official list go to the Registrar's Office, Degree Services webpage and view the degree audit.
 For the most current and complete list of course prerequisites and restrictions go to the Registrar's Office, Registration webpage and view the course descriptions.