

Total Academic Credits.: 128  
+ 3 Co-Curricular Units



Michigan Tech  
College of Business

Course Subject and Number  
Course Title  
Level Restrict, Course Credits  
Semesters Offered  
(F=Fall, S=Spring, Su=Summer)

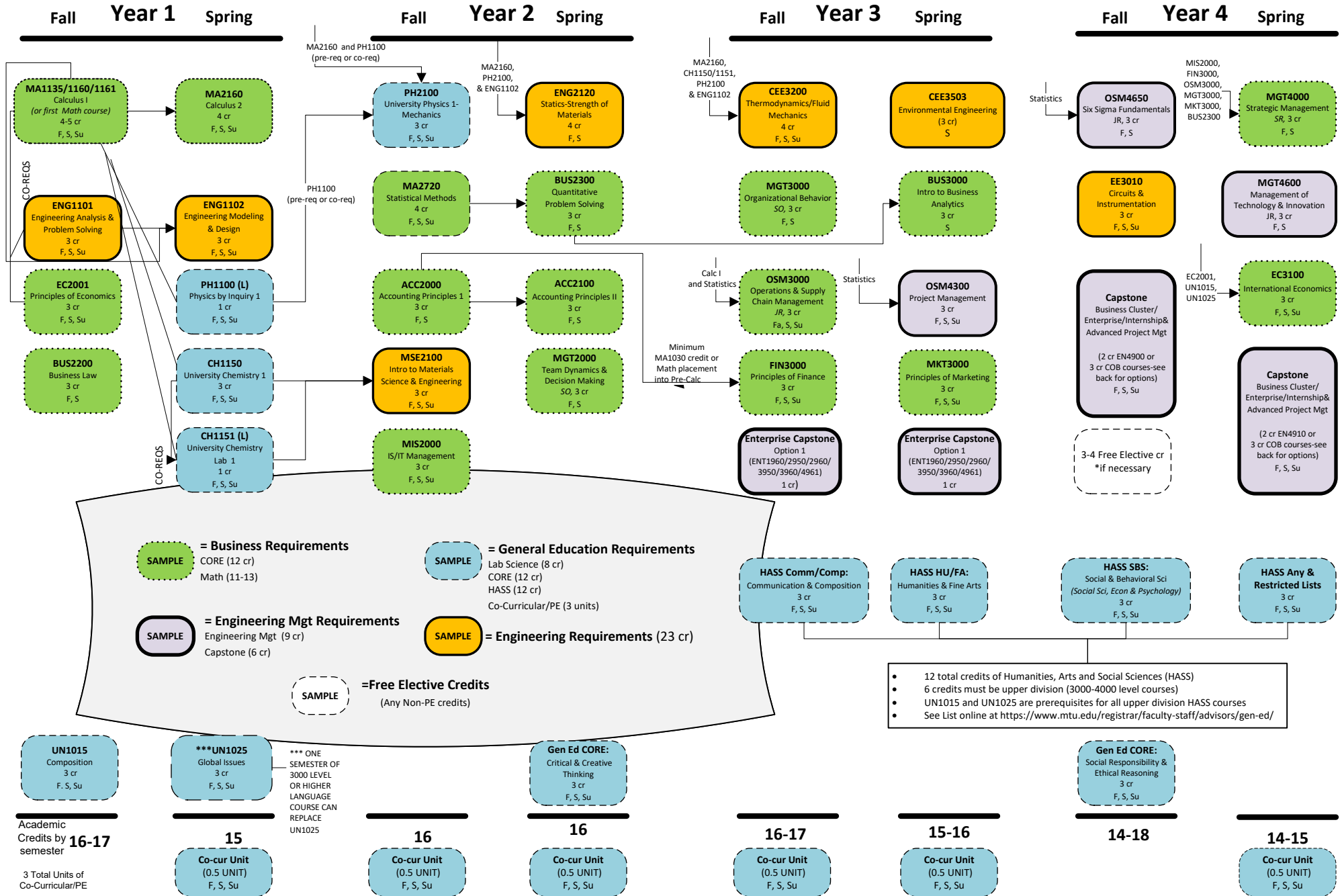
# ENGINEERING MANAGEMENT <sup>(BEM)</sup>

## \*FLOWCHART

### 2023-24 Academic Catalog Year

**\*NOTE:**

- Flowchart is a guide for course sequencing recommendations.
  - COB courses have some flexibility.
  - Note if any pre-requisites or class level required before taking a course.
  - Actual Degree requirements are determined by your catalog term
  - Meet with COB Academic Advisor annually for academic goal planning
- Your Official Audit can be found in MyMichiganTech with u.achieve Interactive Degree Audit.



# Engineering Undergrads:

There are options to double major/dual degree with Engineering Management. See COB Academic Advisor. Course substitutions will be made for some courses.

Additionally the COB offers Master's Degree options:

MEM, Master's in Engineering Management

(<https://www.mtu.edu/business/graduate/engineering-management/>)

TechMBA® Program

(<https://www.mtu.edu/business/graduate/techmba/>)

<b>Capstone Requirements: 6 Credits (choose 1 option below)</b>			Typical Semester Offering
<b>Option 1: Enterprise Work (must be completed with 4 semesters)</b>			
ENT 4900	Sr Enterprise Project Work V Non-Capstone	2	Fall/Spring
ENT 4910	Sr Enterprise Project Work VI Non-Capstone	2	Fall/Spring
<b>And select 2 courses below:</b>			
ENT 1960	Enterprise Orientation - Spring	1	Fall/Spring
ENT 2950	Enterprise Project Work I	1	Fall/Spring
ENT 2960	Enterprise Project Work II	1	Fall/Spring
ENT 3950	Enterprise Project Work III	1	Fall/Spring
ENT 3960	Enterprise Project Work IV	1	Fall/Spring
ENT 4961	Enterprise Project Work VII	1	Fall/Spring
<b>Option 2: Business Cluster (select 2 courses with same prefix)</b>			
ACC 3500	Managerial/Cost Accounting I	3	Spring
<b>and</b> ACC 4500	Managerial/Cost Accounting II	3	On Demand
EC 3300	Industrial Organization	3	Fall
<b>and</b> EC 4200	Econometrics	3	Fall
FIN 4100	Advanced Financial Management	3	Fall
<b>and</b> FIN 4500	Risk Management	3	Spring
MGT 3800	Innovation and Entrepreneurship	3	Fall/Spring
<b>and</b> MGT 4650	Commercialization of Advanced Technologies	3	Spring
MIS 3100	Business Database Management	3	Fall
<b>and</b> MIS 3200	Systems Analysis and Design	3	Spring
MKT 4100	Sales and Sales Technology	3	Fall
<b>and</b> MKT 4200	Business to Business Mktg in the Digital Age	3	Spring
OSM 3150	Introduction to Supply Chain Management	3	Fall
<b>and</b> OSM 3600	Procurement & Supply Management	3	Fall
OSM 3150	Introduction to Supply Chain Management	3	Fall
<b>and</b> OSM 4700	Logistics & Transportation Management	3	Spring
<b>Option 3: Business Internship/Advanced Project Mgt</b>			
BUS 3900	Business Internship	3	Any Semester
OSM 4350	Advanced Project Management	3	Spring (must apply)